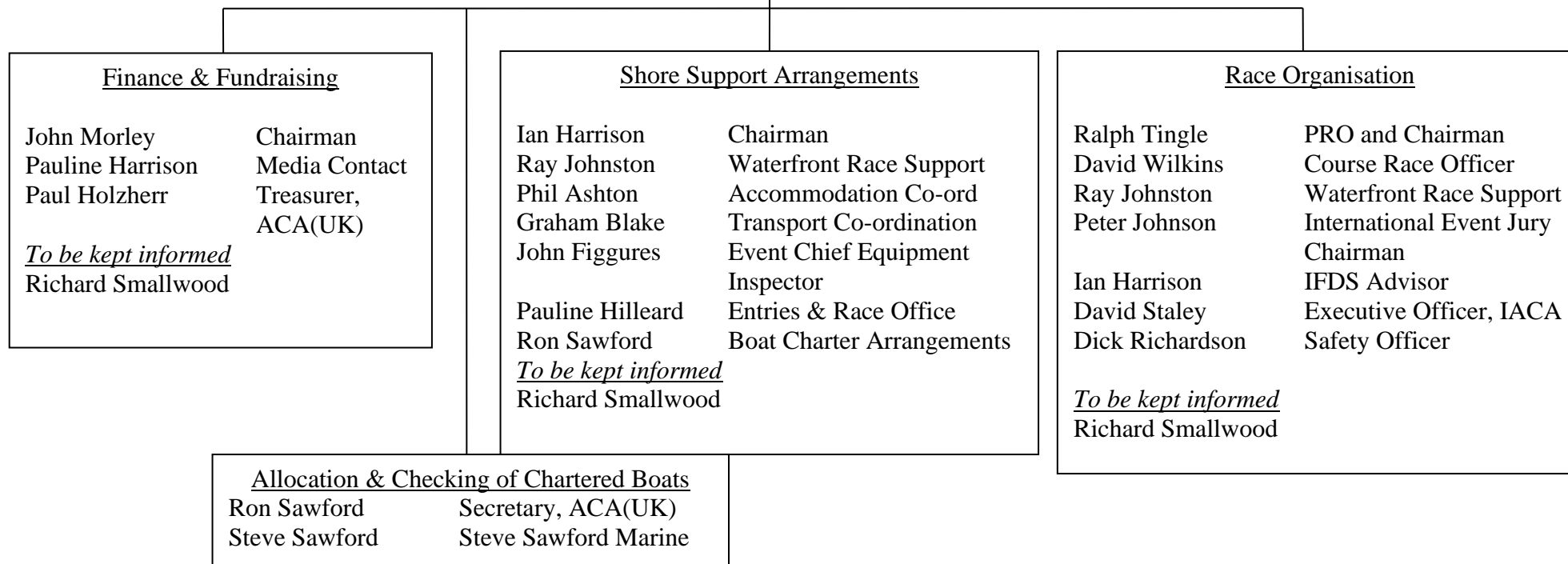


Richard Smallwood
Overall Chairman



N.B. In addition to the overall Chairman and the Chairmen of the Sub-Committees, the following will be invited to meetings of the Main Committee

| | | |
|------------------|--|--|
| Debbie Blachford | Manager, RYA Sailability | |
| Bruce Bonar | Manager, Rutland Sailing Club | |
| John Figgures | Event Chief Equipment Inspector | |
| Gordon Harle | Vice Chairman, ACA(UK) and SKUD representative | |
| Pauline Harrison | Media Contact | |
| Pauline Hilleard | Entries & Race Office | |
| Richard Johnson | Consultant as required | |
| Ray Johnston | Rutland Waterfront Arrangements | |
| Ron Sawford | Secretary, ACA(UK) | <i>To be kept informed</i> – Terry Peek, President, IACA |
| Steve Sawford | Steve Sawford Marine | Zoltan Pegan, Vice President (Championships), IACA |
| Andy Sheath | Vice Chairman, ACA(UK) | David Staley, Executive Officer, IACA |