

# HANSA UK National Championships 2021

The Organising Authority for the event is Hansa Class UK in conjunction with Rutland Sailability and Rutland Sailing Club

## SAILING INSTRUCTIONS

Rutland Sailing Club 31<sup>st</sup> July and 1<sup>st</sup> August 2021

**1. RULES.** Racing will be governed by **The Racing Rules of Sailing 2021-2024 (RRS), the prescriptions of the RYA and the current Special Class Rules of the Hansa Class UK**, except as modified by these Sailing Instructions.

**2. CONDITIONS OF ENTRY.** The safety of a boat and her entire management including insurance shall be the sole responsibility of the owner/competitor racing the boat who must ensure that the boat and crew are adequate to face the conditions that may arise in the course of a race. Neither the establishment of these sailing instructions nor any inspection of the boat under these conditions in any way limits the absolute responsibility of the owner/competitor for his crew, the boat and the management thereof. The host club and HCUK shall not be responsible for any loss, damage, death or personal injury howsoever caused to the owner/competitor or his/her skipper or crew, as a result of their taking part in the races. Moreover, every owner / competitor warrants the suitability of his/her boat for the races. Boats used in HCUK events must have a minimum of £3 Million Third Party liability Insurance.

**3. PERSONAL SAFETY.** Nationally approved personal floatation devices (PFDs) shall be worn at all times whether afloat or in the vicinity of the pontoons or jetties, except briefly while changing or adjusting clothing or personal equipment. Sailors and their carers are to ensure that the PFDs used are appropriate for the level of disability of the sailor. Flag 'Y' will not be displayed. This changes RRS 40. The wearing of wet or dry suits does not constitute adequate personal buoyancy.

N.B. Most organising clubs will also require helpers to wear PFDs when on pontoons or jetties.

### 4. NOTICES TO COMPETITORS

**4.1.** Notices to competitors will take the form of a briefing by the Race Officer to be held ashore prior to racing. This briefing will be supported by an Event Specific Schedule (ESS) displayed prominently at the venue on the official notice board. Where an interpretation is required the ESS will be used. The Race Office will be located in the John Merricks Training Building to the EAST of the main clubhouse. The Official Notice Board will be located in the Race Office.

**4.2.** Any changes to these Sailing Instructions will be notified at the briefing and posted on the Official Notice Board referred to in paragraph 4.1 above.

**4.3.** In conveying information and signalling, special consideration shall be given to the needs of sailors with special needs, be they physical, intellectual, emotional or sensory.

### 5. SIGNALS MADE ASHORE AND AFLOAT

Signals made afloat will be displayed on the Committee Boat. Note especially the use of the postponement signal Flag



'Answering Pennant' (AP), e.g. as described in the RRS – Race Signals section at the back of the RRS as published by the RYA. If this flag is only displayed ashore, the 1 minute time between the lowering of the flag and the first warning signal will be extended as described in the ESS and will be no less than 45 minutes.

The signals made ashore will be at the mast next to the club race hut at the WEST end of the club house

### 6. THE COURSE

**6.1. Course Instructions**– The Course to be used will be described at the briefing by the Race Officer and in the ESS prior to racing. Note that this may change during an event with competitors being notified by the method described at the briefing and in the ESS. Initially, the intended course will be a Trapezoid as described in Addendum B of these

SI's. Marks will be YELLOW spherical marks, except Mark 1A and 4A which will be a BLACK spherical marks. The Course and Number of laps for each class will be displayed on a board at the back of the Start Committee Boat.

**6.2. Start and Finish Line** – these will be described in the ESS and will be between a Committee Boat flying the appropriate flags and an outer distance mark. A course should be set to ensure that boats already racing do not pass through the area of the Start Line until all classes have started. However, failure to do this will not be grounds for protest against the Race Officer or Race Committee. See Addendum B for details of Start and Finish Line locations. Start will be between the main mast of the Start Committee Boat flying an ORANGE flag and a dan buoy with an ORANGE flag. The Finish Line will be between a Committee Boat Mast flying a Blue Flag and a Dan Buoy with a BLUE flag



**6.3. Lead Boat**– A lead boat wearing Flag 'L' may be deployed in front of the fleet to indicate the course. It will normally only lead for the first lap of the first race to start. Any error by a lead boat will not be grounds for protest against the Race Committee.

**6.4. Zone at marks** will be as defined in the RRS-Definitions and will be three hull lengths of the boat nearer to the mark.

**6.5. Moving a mark** –When it is necessary and possible, the Race Officer may either move a mark, or lay a substitute mark after the start. This change will be made clear by the lead boat or another support boat. This changes RRS Rule 33. A Change mark will be a BLACK Spherical mark

**6.6. Missing mark** –RRS Rule 34 will be used.

## 7. STARTING PROCEDURE

**7.1.** Races will be started as described in RRS Rule 26.

Flags P; I; Z; U; or Black may be used as the Preparatory signal.

**7.2.** Racing will be organised in five classes with either five or four starts as follows:-

- **SKUD (Open Class, and Full-Servo Class if applicable)**



SKUD Class Flag – Red on White

- **Liberty (Open Class, and Full-Servo Class if applicable)**



Special Class Flag –White on Purple) ;

---

- **Hansa 303 [two-person]**

Special Class Flag – White on Red)



-----

•Hansa 303 [single-person]

Special Class Flag-Red on White);



-----

• Hansa 2.3 (Open Class, and Full-Servo Class if applicable)

Special Class Flag – Blue on White);



**The 303 classes may be combined in one start with both class flags displayed together at the Warning signal.**

**7.3.** The Start Line will be as defined at the briefing and in the ESS (see paragraphs 4.1, 4.2 and 6.2).

**7.4.** After a start sequence has commenced, boats not racing and not involved in the start under way shall keep clear of the start area. Failure to do so may lead to disqualification by the Race Officer. Whilst a start sequence is still in progress, boats already racing shall make every effort to keep clear of the start area and boats preparing to start. Attention is drawn to RRS Rule 23.1.

**7.5. Starting Times** -Intended starting times shall be described in the Notice of Race, if issued, otherwise at the pre-race briefing at paragraph 4.1 above and in the ESS. Two, or exceptionally three, race sequences may be held “back-to-back” in any racing period.

**7.6. Individual Recalls.** These will be made in accordance with RRS Rule 29.1 using



**Flag 'X'** with one sound signal. It is the responsibility of every boat to start correctly. Efforts will be made by the Committee Boat and support boats to notify any boats over the line at the start, or infringing RRS Rule 30.1 concerning the use of Flag “I” as the preparatory signal. Failure to be notified of a starting infringement will not be considered grounds for protest against the Race Officer or Race Committee.

**7.7. General Recalls.** These will be signalled in accordance with RRS Rule 29.1 using **Flag ‘First Substitute’**



and two sound signals,

7.8 The start sequence will not be changed after a General Recall. The start sequence will be stopped until the sequence is restarted with the general recalled class.

## 8. FINISHING

**8.1. Finishing Line.** The Finishing Line will be as defined SI 6.2 and at the briefing (see paragraphs 4.1 and 4.2) and in the ESS unless the race is shortened as in paragraph 8.3. See addendum B for plan of course

**8.2.** Where possible boats that have finished and are no longer racing shall sail clear of the Finish and not interfere with boats that are still racing by keeping well clear of the finishing area. RRS Rule 24.1 applies.

**8.3. Time Limit.** The target race length is 40 minutes for the leading boat using shorten course procedures as in 8.5 below to achieve these times as nearly as possible. The time limit for other boats will be 15 minutes after the finishing time of the leading boat in their class, unless otherwise indicated at the pre-race briefing, or extended by the Race Officer who may use his/her discretion.

**8.4 Finishing boats using W flag.** Boats who are on legs of the course and prior to crossing the finish line can be finished by a race committee vessel flying **flag W** at the boat. It will be given a finish position the same as at the time of flying flag W at the boat, which will be behind any boats who have finished by crossing the finish line. Boats that have been finished with Flag W should either return immediately to the Start area or if the last race of the session, return to shore.



Flag 'W' will be waved at boats signifying their finish of the race.

**8.5 Shortening Course.** The Race Officer may shorten the course in accordance with RRS Rule 32 using



Flag 'S' over the appropriate class flag(s) and two sound signals.

The race may be finished at any point of the course by creating a new Finishing Line which shall be either the previously designated finishing line, or between a boat flying an 'S' flag and a mark of the course or a specially laid mark.

**If no boat in a particular class is likely to complete the race within 1 hour, the Race Officer may abandon the race in accordance with RRS Rule 32 using**



Flag 'N' over the appropriate class flag and three sound signals.

**9. PENALTIES** The penalty for breaking a rule of Part 2 of the RRS, including touching a mark of the Course, is to make ONE turn in the same direction including one tack and one gybe while keeping clear of all other boats. This changes RRS Rule 44.1.

## 10. PROTESTS

**10.1.** RRS Rule 61.1(a) requires a hail of 'PROTEST' by any boat intending to make a protest. This will only be waived if no crew member of the protesting boat is physically able to make such a hail.

**10.2.** Those with right of way need to take into consideration possible delayed reaction times and possible limited manoeuvrability of other sailors. Protest Committees will take this into consideration when hearing a protest involving right of way rules.

**10.3.** Protests shall be notified to the Race Officer on the Finish boat as she finishes or other shore based official within 30 minutes of coming ashore. A written protest must be lodged at the Race Office within 75 minutes of the time of the last boat in the class finishing the last race in a back to back series.

**10.4.** The helmsman of a competing boat which is the subject of a protest and who, on coming ashore and taking advice, decides that he or she has indeed infringed a rule of Part 2 of the RRS may agree to take a points penalty equivalent to two places in the relevant race. Agreement to take this 2 point penalty must be done within the time limit set in these Sailing Instructions for the lodging of a formal written Protest as in SI10.3. In event of two or more infringements by the same boat, a penalty of 2 points must be taken for each infringement. This will not affect the points awarded to other competitors in the race. In event of such an incident being the subject of a protest or protests, all parties to the protest(s) must agree to the taking of this alternative points penalty. If there is no such agreement, the protest(s) shall be heard.

## **11. OUTSIDE HELP**

**RRS Rule 41 is modified** to permit any boat to receive help from a Support Boat for any reason other than for additional propulsion. To request help, arms should be raised and lowered, or repeated blasts made on a whistle, or an approved hand held flag should be waved until acknowledged by a Support Boat. Any boat being aground, or on a lee shore, and then pulled off by a Support Boat shall not be penalised ON CONDITION that no advantage is given to the competitor in making progress towards the next mark of the course.

**12. DECLARATIONS** No declarations shall be required.

**13. SCORING SYSTEM** The 'Low Point' scoring system, RRS Rule 90.3 and Appendix A shall apply. The completion of two races will be sufficient to constitute a series. In a race series of three or more races a boat's worst score will be discarded.

**14. LOCAL RULES.** Any Local Rules are deemed to be part of these Sailing Instructions. Details shall be made available at the briefing (see paragraphs 4.1 and 4.2 above) and in the ESS.

14.1 Rutland Belle, a pleasure cruiser that operates on Rutland Water which has limited manoeuvrability and has Right of Way at all times

14.2 Fishing boats that are drifting should be given clearance of about 50 metres as they will be fishing and casting lines

14.3 Boats racing should not sail through moored boats in East and West Creeks – see map in Addendum A

**15. ADDITIONAL REQUIREMENTS Retirement from a race.** A competitor wishing to retire must inform the Race Officer or a Support Boat of their intentions before leaving the racing area. If communication is not possible, he/she should make every effort to inform an appropriate event official at the earliest possible time after coming ashore.

## **16. EVENT SPECIFIC SCHEDULE (ESS)**

The ESS will provide information on the location of the official notice board, the racing area, course marks, courses to be sailed, location of the signals made ashore, the location of the race office and the time of the first warning signal. Any difference between ESS and SI's, SI's will prevail

## **17. CHANGE OF CREW**

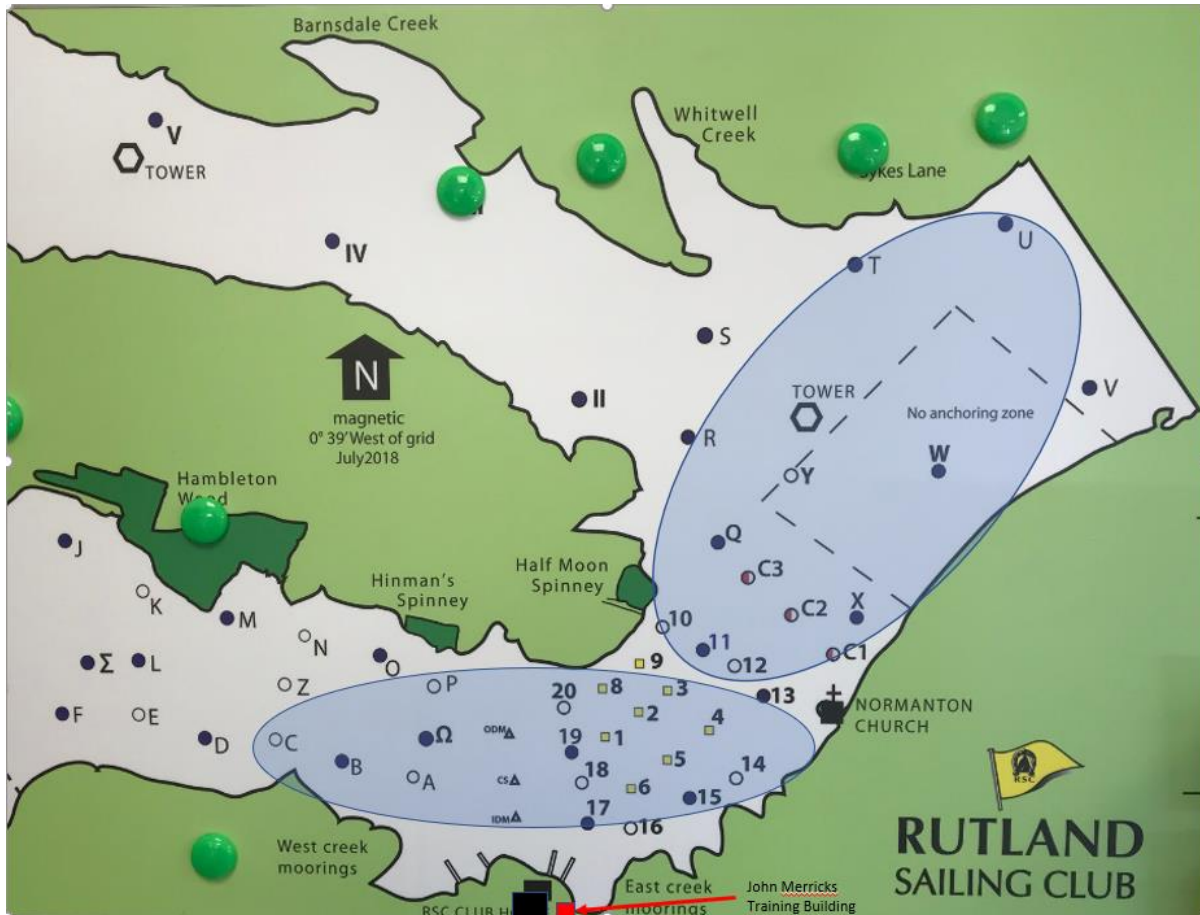
**17.1 Crew changes in single-handed classes cannot be made**

**17.2 Any crew changes in double-handed classes must be requested in writing to the Race Committee. Before any crew changes are allowed, these must be agreed in writing by the Race Committee.**

# Addendum A

## Map of Rutland Water and location of course area and facilities

Locations of course area will depend on the wind direction and speed on each day. But is indicated by the blue area on the map



# **ADDENDUM B**

## **Courses**

### **Course OL - SKUDS**

1 Lap	Start, 1A, 2, 3, Finish
2 Laps	Start, 1A, 2, 3, 2, 3, Finish
3 Laps	Start, 1A, 2, 3, 2, 3, 2, 3, Finish
4 Laps	Start, 1A, 2, 3, 2, 3, 2, 3, 2, 3, Finish

### **Course O - LIBERTY**

1 Lap	Start, 1, 2, 3, Finish
2 Laps	Start, 1, 2, 3, 2, 3, Finish
3 Laps	Start, 1, 2, 3, 2, 3, 2, 3, Finish
4 Laps	Start, 1, 2, 3, 2, 3, 2, 3, 2, 3, Finish

### **Course I – 303 DH, 303 SH**

1 Lap	Start, 1, 2, 3, Finish
2 Laps	Start, 1, 4, 1, 2, 3, Finish
3 Laps	Start, 1, 4, 1, 4, 1, 2, 3, Finish
4 Laps	Start, 1, 4, 1, 4, 1, 4, 1, 2, 3, Finish

### **Course IS – 2.3**

1 Lap	Start, 1, 2, 3, Finish
2 Laps	Start, 1, 4A, 1, 2, 3, Finish
3 Laps	Start, 1, 4A, 1, 4A, 1, 2, 3, Finish
4 Laps	Start, 1, 4A, 1, 4A, 1, 4A, 1, 2, 3, Finish

